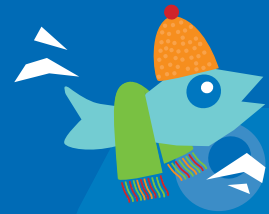




global health source
allied health recruitment



Winter '18

IMPORTANT IMMIGRATION UPDATES

Since the announcement in April 2018 concerning Australia's migration program, there have been a number of changes to the general skilled and employer sponsored work visa pathways.

All applicants applying for a 'points based' migration visa under the Skilled Independent (subclass 189) or Skilled Nominated (subclass 190) pathway must now be under the age of 45 years at the time of invitation to apply.

The Temporary Work 457 visa was abolished 18th March 2018 and replaced by the Temporary Skill Shortage (TSS) visa. Under this new program, a visa applicant can be sponsored to work under one of three streams. All allied health professions remain on the Medium-Term stream, which means a visa applicant can be issued a visa for up to 4 years and may remain eligible for a pathway to permanent residence under the permanent employer sponsored visa program.

If you held a 457 on or before 18 April 2017, you may be able to apply for a permanent employer sponsored visa under the Employer Nomination Scheme (subclass 186) or Regional Sponsored Migration Scheme (subclass 187) visa if you are less than 50 years of age and have worked with your sponsoring employer for at least two years.

If you have applied for and subsequently granted a 457 or TSS visa after 18 April 2017, you must now be under 45 years at time of application and may be eligible for permanent residence after working with your sponsoring employer for at least three years. You may be eligible to apply sooner under certain circumstances if you hold a positive skills assessment from the relevant skills assessing authority for your occupation.

If you would like further information regarding your eligibility for a temporary or permanent visa to work in Australia, please do not hesitate to contact us.

NEW ZEALAND REGISTRATION UPDATE

The registration application process for NZMRTB has recently changed. All applications are to be made electronically by visiting NZMRTB online: <http://www.mrtboard.org.nz>

Desperately Seeking

General Radiographer

A public health facility client is seeking a general radiographer for a 3 month locum role at their site located on New Zealand's South Island. CT experience will be advantageous.

Sonographer

We are seeking experienced sonographers for permanent, locum and contract roles at city, coastal and rural sites located in the North Island of New Zealand.

General Radiographer

We are seeking a general radiographer to cover a parental leave position within a public health facility, located on the east coast of New Zealand's north Island.

Radiographer / Mammographer - Mixed Role

Are you a radiographer with mammography experience? We currently have a mixed general / mammography role at a private practice located in the North Island of New Zealand. Talk to us for more details.

Mammographer

Permanent and short term dedicated mammography assignments available in Australia and New Zealand with our public health facility clients. Some roles will involve regional travel. Competitive rates and relocation assistance are on offer for suitable candidates.

Echo / Cardiac Sonographer

An established private practice client, located in Western Australia, is keen to recruit a permanent echosonographer. This role will include a competitive salary, initial accommodation and relocation assistance.

Echo / Cardiac Sonographer

A new role has become available in coastal New South Wales, for an experienced cardiac sonographer. A highly competitive package will be offered to the successful candidate.

Locum Echosonographers

We have a variety of temporary locum options across Australia including Melbourne, coastal Queensland, Perth metro and NSW.

Opportunities in

Tauranga, New Zealand

Tauranga is the largest urban city in the Bay of Plenty in the North Island of New Zealand. Tauranga is 216kms east of Auckland, 107kms south-east of Hamilton and 86kms north of Rotorua. Tauranga is a fast growing city in New Zealand with a population of just over 130,000. The population increase is due mostly to retirees settling in the city, and sun and surf seekers. It is also a popular lifestyle city. Tauranga's harbour is in evidence almost everywhere you go, providing the urban area with an attractive waterfront setting. Fishing, sailing, diving and dolphin tours are easy to arrange, or check out one of the local beauty spots – McLaren Falls or the Kaimai Mamaku Forest Park. Downtown Tauranga has several historically significant areas to view during a scenic walk around the area. The Strand waterfront area is home to a number of cafes, restaurants, pubs and nightclubs. Tauranga has seventeen education institutions which include private English language schools, state and private primary and high schools, private training establishments, a polytechnic and a university. Due to its sheltered position on the east coast, Tauranga enjoys a warm, dry climate. During the summer months the population swells as holidaymakers descend on the city. The sunny Pacific Coast of the Bay of Plenty offers some of New Zealand's finest beaches for swimming, surfing and other water sports - Mount Maunganui is among the best known beaches in the country.

Ballarat, Victoria

Ballarat is a regional city rich in both culture and heritage, located 115km west of Melbourne (1 hour and 15 minutes). Ballarat is oozing character; everything from the streetscapes to the trees, the cafes and the major attractions, is full of beauty, wonder and charm. Giving yourself time to wander, get lost and discover for yourself is all part of the fun in this city. Heritage buildings, picturesque streetscapes and a range of activities await you, set against the backdrop of genuine country benefits such as clear skies, open spaces and a relaxed pace of daily life. The city of Ballarat has an estimated population of over 93,500 and experiences average temperatures between 10°C - 30°C in summer and 3°C - 10°C in winter. You will be spoilt for choice year-round when it comes to festivals and events to attend in the region – festivals that showcase music and arts, the old and the new, the indoors and the outdoors, food and drink, everything!

Darwin, Northern Territory

Darwin is the capital city of the Northern Territory of Australia. Situated on the Timor Sea, Darwin is the largest city in the populated Northern Territory, with a population of 145,916. Darwin is an ideal base for visits to stunning World Heritage listed areas, surrounding national parks and attractions including Kakadu National Park. Experience the nightlife along Mitchell Street, where you will find the heart of Darwin's restaurants, pubs and clubs. You will also find harbour-side entertainment along the fashionable boardwalks of Cullen Bay Marina, Skycity Casino, Mindil Beach, and the Ski or Sailing Club to take in the spectacular sunsets. The Darwin region, like the rest of the Top End, has a tropical climate, with a wet and a dry season. The temperatures in Darwin sit for most of the year in the low thirties. Between May and October the climate is dry and still. In November the wet season arrives and the city is subjected to months of high humidity, high winds and high rainfall. That said there are many people who come especially for this season. The human population drops, the wildlife expands and the landscape of the city and surrounds turn a lush shade of tropical green.

Dunedin, New Zealand

Dunedin is located on the south-east coast of the South Island of New Zealand. It is a city nestled in tree-clad hills at the head of a spectacular harbour. Dunedin is the gateway to the Otago region. With a population of 127,500, including a student population 25,000 Dunedin is New Zealand's largest city by area and arguably the most spectacular in terms of contrasting landscapes. It is New Zealand's oldest city which possesses a unique combination of cultural riches, Victorian and Edwardian architecture and world-famous wildlife reserves. The Dunedin urban area lies on the central-eastern coast of Otago, surrounding the head of Otago Harbour. The harbour and hills around Dunedin are the remnants of an extinct volcano. Dunedin has a reputation for educational excellence. Home to New Zealand's oldest University, Dunedin is known as a 'student city'. The climate of Dunedin in general is temperate; however the city is recognised as having a large number of microclimates and the weather conditions often vary between suburbs mostly due to the city's topographical layout. It is also greatly modified by its proximity to the ocean. This leads to warm summers and cool winters.

Winter Pick

Are you an experienced echosonographer looking for a new challenge?

Our client is based close to Sydney, on the coast and is seeking a new sonographer to join their friendly team. If you would like to make a new life in a thriving community and work with a small dedicated team, this might be the job for you. Contact us now to discuss.



Desperately Seeking

Physiotherapist

We are seeking qualified physiotherapists with experience in hospital and private practice settings, for multiple roles within New Zealand. These full time roles offer a competitive salary based on experience, within a supportive physiotherapy team.

Physiotherapist

We have opportunities for a physiotherapist to work within supportive, growing private practices located in coastal New South Wales, Perth and Melbourne. Internationally qualified candidates eligible for Australian registration will be considered.

Radiographer

We currently have an opportunity for a radiographer with strong cardiac angiography and vascular experience to work in a public health facility located in Western Australia.

Radiographer

A public health facility client located in the Northern Territory, is currently seeking experienced radiographers with strong CT or MRI experience for permanent roles. These full time roles will offer a competitive salary based on experience.

Sonographer

We are currently seeking an experienced sonographer for a permanent role with one of our public health facility clients located in the Northern Territory. This role will be offering a competitive salary based on experience.

CT Radiographer

We currently have a variety of opportunities available for CT experienced radiographers across Australia, in both public and private sectors. Many of our clients require permanent staff and others have short term relief needs.



Best Wishes

Melvin Bonnin is a UK qualified CT radiographer who has recently relocated to Temora, New South Wales with his family and has accepted a long term role within a private practice group.

Liezl Jubber is a South African qualified radiographer who has made the move to Gold Coast, Queensland with her husband and has accepted a long term role within a private practice group.

Kirsty Anderson is a South African qualified radiographer, who has travelled with her family to join an established private practice group in Albany, Western Australia.

Aled Archer is a British qualified echosonographer who has relocated with his family, to commence a role within a private practice in Perth, Western Australia.

Stephanie Groombridge-Dohan is a Canadian echosonographer who is undertaking a contract position at a public hospital in Wellington, New Zealand.

Linda Janse Van Rensburg is a South African qualified sonographer who has relocated with her husband to commence a role with a private practice group on the North Island of New Zealand.

Racquel Dela-Cruz is a Filipino qualified echosonographer who has relocated from Singapore, to commence a position within a private practice group in New South Wales, Australia.

Kathryn Reed is a British qualified cardiac physiologist who has relocated from the UK with her partner to commence a role within a public hospital in New Zealand's south island.

Megan Harvey is a New Zealand qualified radiographer who has relocated from New Zealand's North Island and commenced a dedicated mammography position in the Northern Territory, Australia.

Viki Bowker is a South African qualified radiographer who has relocated with her family and commenced a dedicated mammography role in Auckland, New Zealand.

Brooklyn Assmus is a Canadian sonographer who is undertaking a six month contract position within a public health facility in New Zealand's North Island.

Deidre Laing is a South African qualified radiographer has relocated to New Zealand's north island to commence a dedicated mammography role with a public health facility.

Catarina Guerra Lourenco a Portuguese qualified echosonographer who has relocated with her partner and commenced a role with a public health facility in Victoria, Australia.



Dates for your diary

Mammography

8 - 10 July 2018

Symposium Mammographicum 2018

Liverpool, United Kingdom

Medical Imaging

8 - 9 September 2018

ASA SIG 2018

Perth, Western Australia

Physiotherapy

13 - 14 August 2018

6th International Conference & Exhibition on Physiotherapy & Physical Rehabilitation

London, UK

FUN FACTS

Australia has one of the largest immigrant populations in the Western world. According to the 2011 census, Australia is home to more people born overseas per capita than New Zealand, Canada, the US, and the UK. New Zealand is only a few points behind with 23 per cent, while the US and the UK only boast immigrant populations of 13 per cent.

The range of temperatures in New Zealand between winter and summer is less extreme than in most countries.

The Great Barrier Reef, off the coast of Queensland, is the planet's largest living structure.

Auckland is one of the most affordable cities in the world to live in.

Australia is the only nation to govern an entire continent and its outlying islands.

The mainland of Australia is the largest island and the smallest, flattest continent on Earth. It lies between 10° and 39° South latitude. The highest point on the mainland, Mount Kosciuszko, is only 2,228 metres.

New Zealand has a population of 4.4 million people (informally known as Kiwis), approximately 69% are of European descent, 14.6% are indigenous Māori, 9.2% Asian and 6.9% non-Māori Pacific Islanders.

Climate



	JUNE			JULY			AUGUST		
	Min (°C)	Max (°C)	Rainfall (mm)	Min (°C)	Max (°C)	Rainfall (mm)	Min (°C)	Max (°C)	Rainfall (mm)
Sydney	9	18	120	7	17	69	8	18	77
Melbourne	7	14	49	6	13	48	7	15	50
Brisbane	11	21	71	10	21	63	10	22	43
Cairns	18	26	46	17	26	29	17	27	27
Darwin	20	31	2	19	31	1	20	31	5
Perth	9	19	162	8	18	159	8	18	117
Adelaide	9	16	72	8	15	67	8	16	62
Hobart	5	12	54	5	12	52	5	13	54
Auckland	9	15	50	8	14	60	8	15	50
Wellington	8	12	40	7	12	30	8	13	40
Christchurch	2	11	30	1	11	20	3	12	50



global health source

allied health recruitment

For further information or to discuss your interest in employment contact Global Health Source on:

Freecall Australia: 1800 010 822
Overseas: 00800 9227 0822

t +61 8 9227 0822
f +61 8 9227 0833

w globalhealth.com.au
e ghs@globalhealth.com.au

PO Box 8186 Perth WA 6849
338 Beaufort Street Perth WA 6000