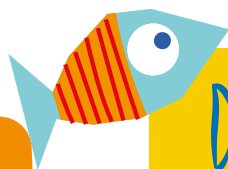




THANK YOU

A very big thank you to all of our recent arrivals, who have been subjected to many different trials and tribulations in the past few months! Continuously facing ever changing travel restrictions, barriers to immigration, and issues with flights and accommodation without a single complaint, you have all made our jobs much easier, and for this we cannot thank you enough.

NZ FUN FACTS



1. There are nine sheep per person in New Zealand, making it the highest ratio in the world.

2. The kiwi fruit is not native to New Zealand. It's actually from China, but it was named after the kiwi bird.

3. The clearest lake in the world is Nelson's Blue Lake, with visibility of up to 80 meters.

4. No matter where you are in New Zealand, you'll never be more than 128 km from the seaside.

5. New Zealand is only 5% human. The rest are animals, making it the highest animal to human ratio in the world.

6. There are no snakes in New Zealand. Not one!

Desperately Seeking

Physiotherapists

GHS is seeking physiotherapists and occupational therapists for permanent positions throughout Australia. Some clients offer sponsorship to international recruits who do not hold work rights. New graduates from Australia and New Zealand will also be considered for these roles. If you are tempted by the Australian lifestyle, contact GHS today for a confidential discussion.

Sonographers

GHS has opportunities for accredited sonographers to work within private practice and hospital settings in idyllic Australian locations. Many facilities require permanent staff and others have short term locum needs. Contracts include assistance with accommodation, travel expenses and in the case of long-term opportunities, employers may cover visa requirements for non-residents of Australia.



The Covid Year

On March 19 and 20 last year, Australia and New Zealand closed their borders to anyone who was not a citizen or resident. Both countries determined they were no longer willing to accept the risk at their borders, which is predominantly where Covid was entering the country. Visitors onshore were told to return to their home countries as soon as possible, as each country worldwide prepared for its own inevitable lockdown.

One year later, Australia and New Zealand, as islands, have fared much better than many countries. Life is more or less returning to normal. Aside from the occasional temporary lockdown as the virus escapes quarantine, both countries have protected their citizens admirably. Vaccination of their populations has now commenced. It cannot go unmentioned that criticism has been levelled at both countries for the inability of their own residents and citizens to return home from overseas due to arrival caps, quarantine availability and airfare affordability issues. Seemingly, no system is perfect. From 19 April 2021, a two-way travel corridor between Australia and New Zealand will commence.



Travel Bubble

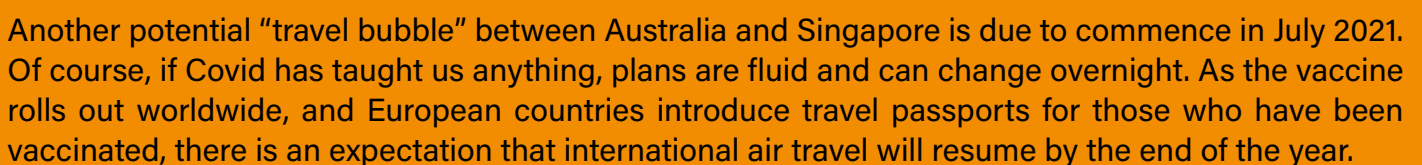
New Zealand to Australia

From 19 April 2021, the New Zealand safe travel zone allows for travellers who have been in New Zealand for 14 days to travel by air to any State in Australia quarantine-free, without applying for a travel exemption. Routine pre-departure and on arrival screening will apply.

Australia to New Zealand

From 19 April 2021, people who have been in either Australia or New Zealand for 14 days or more can travel quarantine-free to New Zealand. This includes people who have spent all 14 days in Australia, or people who have travelled from New Zealand to Australia and are returning within 14 days. To travel quarantine-free you must meet the New Zealand Government's health pre-conditions. All other normal entry requirements, like immigration and biosecurity, apply. Be aware that quarantine-free travel could be paused or suspended at any time, so it is important to stay up to date.

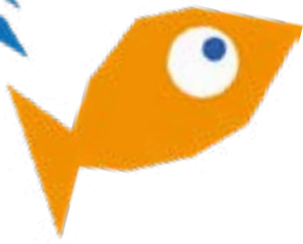
Australian citizens and permanent residents who have been in Australia for 14 days before departure can travel to New Zealand without applying for an outwards travel exemption. Please note that this only applies when New Zealand is the destination of travel. If you are transiting through New Zealand to another destination, you must apply for an outward travel exemption.



Another potential "travel bubble" between Australia and Singapore is due to commence in July 2021. Of course, if Covid has taught us anything, plans are fluid and can change overnight. As the vaccine rolls out worldwide, and European countries introduce travel passports for those who have been vaccinated, there is an expectation that international air travel will resume by the end of the year.



Ready to take the plunge?



Dive into a new adventure in Australia!

PRO-TIP

Do not throw out your old passports. You may need these for future police certificates.

TRAVELLING IN COVID

Gone are the days of securing a role, applying for a visa and booking your tickets. With border closures and the ban on some nationalities travelling through certain countries, the process has become considerably more complex. What you say in your travel or border exemption application is as important as the supporting documentation you provide. Our success rate in obtaining travel and border exemptions is exceptional. Don't waste any more money on failed attempts. If you are a health care worker, seeking or in possession of a job offer in Australia or New Zealand the GHS migration team can provide you with the greatest chance of obtaining a travel or border exemption successfully. Past refusal of a travel or border exemption request does not prevent re-application nor subsequently a successful exemption.

Of course, the travel and border exemption is only part of the puzzle – although a crucial one. We can provide advice and help you attain critical purpose and ongoing employer sponsored visas, organise managed isolation and provide direction on pre-departure Covid testing, travel declarations and state border applications (if relevant). For all of our recruits timing is now everything. GHS supports you throughout the process to provide peace of mind and ensure that you have all the paperwork necessary for a successful relocation. Take the guesswork and stress out of the process and give GHS a call.

OPPORTUNITIES IN

Perth, Western Australia

Perth is the capital of Western Australia and is situated on the banks of the Swan River. Perth has fine and sunny weather for most of the year and with over 80 kilometres of white sandy beaches, the coast is ideal for swimming and surfing. Perth locals enjoy a relaxed outdoors lifestyle as does its neighbouring port city Fremantle. Boasting a number of world class schools and universities, Perth offers a host of cultural attractions and festivals throughout the calendar year. With a population of just over two million people, Perth is a major city with a small-town feel.

Wollongong, New South Wales

Wollongong is New South Wales' third largest city after Sydney and Newcastle with an estimated population of 307,000. Known to locals as "the Gong" it is located approximately one hour south of Sydney. Wollongong has a warm oceanic climate, beautiful beaches, rugged cliffs and has a reputation for adventure sports. Wollongong is a multicultural city and is jam packed with entertainment options.

Melbourne, Victoria

Melbourne is the second largest city in Australia and is the capital of the state of Victoria. It has a population of just over five million. Melbourne is perhaps Australia's most cultured city, a combination of old and new architecture, elegant streetscapes, harmonious ethnic communities and lavish parks and gardens. When you venture outside Melbourne, diverse regional areas and attractions offer dramatic coastal vistas, ski slopes, outback wilderness, vineyards, rugged mountain peaks and enthralling wildlife.

AUS FUN FACTS

1. If you visit one new beach in Australia every day, it would take over 27 years to see them all.
2. There are 60 designated wine regions in Australia, producing approximately 1.35 trillion bottles of wine every year.
3. 90% of Australians live on the coast.
4. The Australian alps receive more snowfall than Switzerland.
5. Tasmania has the cleanest air in the world.
6. Australia is the only continent in the world without an active volcano.



Location, Location, Location

Hamilton, New Zealand

Hamilton is located on the North Island, 120 kilometres south of Auckland and 100 kilometres north-west of Rotorua and it has a temperate climate. It is within easy reach of popular beaches and ski fields are only a three hour drive away.

Hamilton's population is approximately 176,000 and it is the fourth most populous city in the country. Within Hamilton, there are several primary and secondary schools both state and private, as well as the University of Waikato and Waikato Institute of Technology.

Hamilton is home to the Waikato River running through the city, providing the opportunity for a variety of water sports. Lake Rotorua, an enormous aquatic and recreational playground is also situated in the centre of the city.

From magnificent parks and gardens to a thriving cultural precinct, the city offers a vibrant combination of fine dining and nightlife options as well as an eclectic mix of leisure, lifestyle and activity choices.



New Zealand Residence Programme

On 19 October 2020 Immigration announced that selection of EOIs for residence under the Skilled Migrant Category would be deferred for six months. As the six month mark quickly approaches (19 April 2021), we are yet to receive an announcement from Immigration as to their intentions on re-opening the pool. Please follow GHS on our socials and our blog for any announcements. If you are interested in discussing an alternate pathway to residence please don't hesitate to contact us.

Keep an ear out for GHS. In May we will hit the radiowaves with a podcast and youtube channel with all our registration and immigration news and updates - Stay Tuned!

We Want You

Mammographers

We have permanent roles plus mobile and static locum assignments in Australia and New Zealand. Permanent roles include a relocation package, and locum roles include a daily allowance, accommodation and return travel.

Cardiac Sonographers

We have multiple opportunities for experienced cardiac sonographers in Australia and New Zealand. If you are interested in a change of lifestyle please contact us to discuss.

Physiotherapists

We are seeking experienced physiotherapists for a client in the southern region of Western Australia. Locum and permanent contracts are available and include accommodation. Travel costs may be considered. These roles commence immediately.

Locum Cardiac Sonographer

We have a great opportunity for an experienced cardiac sonographer keen to work in the Northern Territory of Australia for three weeks commencing late May 2021. The role is a mixture of outreach and onsite hospital work. Our client will provide a competitive hourly rate, accommodation and reimbursement for return travel.

Cardiac Sonographer

We have a permanent opportunity for an experienced cardiac sonographer in New Zealand's north island. Our public health facility client will provide a competitive salary, MIQ accommodation and a relocation package.



BEST FISHES

Hayley Shatford – a radiographer with specialist mammography skills originally from the UK. Hayley previously worked in New Zealand and has moved to Australia with her husband and family to work with the BreastScreen programme.

Sylvia Mokuoane – a young radiographer from South Africa who has made the journey across the world to join a hospital in the north island of NZ.

Jadyn Wichmann – an experienced radiographer from South Africa who has settled with her family in New Zealand's north island and is employed at a public facility.

Mariam Safi Khan – a South African qualified radiographer has relocated from Johannesburg with her husband and daughter to commence a position with a public health facility in NZ's north island.

Donique Paulse – a radiographer with post graduate mammography qualifications relocated from Cape Town with her family to commence a position with a regional hospital in the picturesque south island.

Karusha Shrikumar – a specialist MRI radiographer who is working on the coast in the private sector and has settled with her husband and young family in a scenic north island location.

Nono Bresler – an experienced sonographer from South Africa who is employed at a large regional public facility in the north island of NZ on the east coast.

Tiffany Wiggill – a cardiac physiologist who left South Africa to make a new life in New Zealand's north island.

Chantal Botha – an echosonographer who recently arrived in coastal NSW with her husband from South Africa to join a supportive private group.

Sandra Koen – A radiographer who travelled from Pretoria with her family and who has joined a busy public hospital in New Zealand.

Ashley Makufeni – an experienced radiographer relocated from South Africa with her family to commence a role at a regional facility in the north island of NZ.

MY EXPERIENCE WITH GHS



Ariana Silva – a Portuguese cardiac sonographer who has travelled the country on a working holiday visa with her partner and has accepted a longer term role at a private practice in NSW.

Kathleen Locaylocay – a young occupational therapist from the Philippines who has joined a leading allied health and disability services provider in South Australia.

Fatima Patel-Weldon – a South African qualified occupational therapist has relocated from South Africa with her family and has settled in NZ's south island and is working in a public health facility.

Elani Naudi – an experienced occupational therapist has relocated from South Africa to Victoria with her family and is working for a not for profit organisation supporting people with disabilities of all ages.

Marlene Kuhl – an experienced mixed modality radiographer who has relocated from South Africa with her family and is working with a large private practice group in a coastal city located in north-eastern Queensland, Australia.

Zaheerah Sampson – an experienced MRI professional who has settled in Wellington with her husband and young daughter.



global health source
allied health recruitment

For further information or to discuss your interest in employment contact Global Health Source on:

Freecall Australia: 1800 010 822
Overseas: 00800 9227 0822

t +61 8 9227 0822
f +61 8 9227 0833

w globalhealth.com.au
e ghs@globalhealth.com.au

PO Box 8186 Perth Western Australia 6849
Address 338 Beaufort Street Perth WA 6000