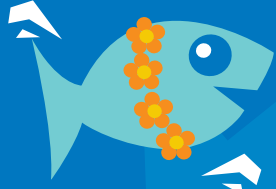
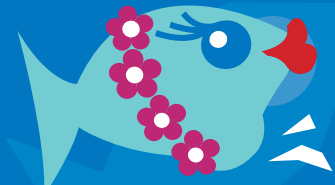




**global health source**  
allied health recruitment



# Spring 17

## New Zealand Registration Update

There have been recent discussions around the current costs of application registration fees relating to the New Zealand Medical Radiation Technologists Board (NZMRTB).

Significant price increases are expected within the next registration year and as such, if you are planning on applying for registration in the near future, we suggest you do so sooner rather than later!

## Calling all Mammographers

Looking for a change? We have a number of breast imaging clients located across both Australia and New Zealand looking for locum and long term radiographers with mammography experience. Roles are varied between mobile and static, with majority offering competitive base salaries and daily allowances. If you are interested or know someone who might be, contact us today to join the GHS team!



## Spring Pick

### Fancy a sea change?

Global Health Source is seeking an experienced cardiac sonographer with strong paediatric skills, for a full time role within a large public facility, located in Auckland. This position is based within a supportive environment offering a competitive salary and relocation package. A broad range of cardiac skills is essential and international candidates will be considered. Living and working in Auckland offers both exceptional job opportunities and a balanced lifestyle, where you can make the most of the dining, shopping, beaches, islands and adventures. And with a booming economy opening up more jobs than ever before, now's the time to make your move. If you are interested or know of someone who may be, contact us to discuss further!

## Desperately Seeking

### Sonographer

Our large independent client is looking for an experienced sonographer for a permanent position at their site in Colac, Victoria. This role is based at the hospital site and requires the use of Philips ultrasound equipment. Competitive salary offered based on experience.

### Physiotherapists

Seeking a qualified physiotherapist with hospital and community experience, for multiple roles within South Australia. These full time role offers a competitive salary based on experience within a supportive physiotherapy team.

### Echocardiographer

Our client, located in Perth, Western Australia is looking for an experienced cardiac sonographer for a permanent position. This private facility provides an outpatient service and a mix of stress and dobutamine testing within a supportive working environment. Competitive salary offered based on experience.

### Radiographer

Our public hospital client is looking for an experienced locum general and CT radiographer for their site located in the northern-most point of New Zealand's south island. Experience working autonomously would be advantageous for this mixed role.

### Mammographer

Seeking an experienced radiographer for a dedicated mammography role, within a well-established women's imaging group located in Victoria. Attractive allowances are provided on top of a base salary within this friendly and supportive medical imaging team.

### CT Radiographers

Seeking experienced radiographers with strong CT skills for a private practice group with sites located across New South Wales. These full time, permanent positions are with a large, independent group with multiple sites across eastern Australia. Experience using Siemens or Philips CT equipment is preferable.

# Opportunities in

## Auckland, New Zealand

The Auckland metropolitan area, in the North Island of New Zealand, is the largest and most populous urban area in the country with over 1 million residents. Built on a narrow isthmus between two island-studded harbours, Auckland is renowned for its beauty, with 100 kilometres of coastline crammed with stunning beaches, 23 regional parks, 2 marine reserves and a landscape dotted with 48 volcanic cones. With all the water surrounding the region, it's no wonder Aucklanders boast the largest boat ownership per capita in the world - that's why it's called "The City of Sails". Auckland's blend of harbour, islands, Polynesian culture and modern city environment has created a lifestyle ranked amongst the best in the world.

## Colac, Victoria

Colac is a small city in the Western District of Victoria, approximately 150 kilometres south-west of Melbourne. Set on the shores of Colac Lake and on the doorstep of the Great Otway National Park, Colac is a lively regional centre close to some of Victoria's most-loved natural attractions. Colac is also known by some as the 'Gateway to the Otways', a reference to the nearby Otway Ranges and the surrounding forests lying to the south of town. Immerse yourself in the serenity! Colac city is a commercial, service and local government centre of nearly 11,000 people. Colac can be accessed via a main highway route to Melbourne (less than 2 hours) or by public transport, including direct coach and train services from Warrnambool and Melbourne. From world-class surfing and ocean swims to folk music, fine wine and seafood, the Great Ocean Road region hosts a diverse range of festivals and events.

## Port Augusta, South Australia

With a population of 15,019 Port Augusta is one of the larger South Australian towns and because of this, offers visitors most of the amenities they would find in any larger city. Port Augusta is located 320 kilometres north of Adelaide and is a genuine crossroads with roads heading north to Alice Springs and Darwin, west to the Nullarbor and the Eyre Peninsula and south-east to Adelaide. Port Augusta became one of the largest service centres in South Australia as it is located on the water. With its rich history, Port August offers a great deal to tourists and is a good base to explore the Flinders Ranges and surrounding areas.

## Whyalla, South Australia

Whyalla is known as the northern gateway to the Eyre Peninsula and is located approximately 390 kilometres, or four and a half hours drive from Adelaide. It has a population just over 23,000 and is the largest provincial city in South Australia. With more than 300 days of sunshine per year, friendly locals and plenty to see and do, Whyalla is an ideal holiday destination or place to live. Boasting spectacular landscapes, scenic views and a vast coastline, Whyalla is commonly referred to the city 'where the outback meets the sea'.

## Warwick, Queensland

Warwick is a town located in southeast Queensland, lying 130 kilometers southwest of Brisbane. It borders on fertile farmlands and the rolling hills of the Great Dividing Range. Sitting on the banks of the Condamine River, historic Warwick, features some of the state's finest original sandstone buildings. Warwick offers a range of activities with choices to suit every person and occasion. Known as the 'Rose and Rodeo City', Warwick hosts one of Australia's oldest and most famous rodeos each year in October. During the spring months, Warwick showcases its wonderful roses throughout its parks and gardens. During the winter months, Brass Monkey Season, the streets of Warwick come alive with the Jumpers and Jazz in July festival. This festival is a unique display of local wit, charm and colour, with custom knitted jumpers for the deciduous trees of the main street.

## Best Wishes

**Anieta Ellis** – a South African qualified radiographer relocating to regional Queensland with her family, after accepting a permanent position within a well-established private practice.

**Unesu Chikavhanga** – a cardiac physiologist from Zimbabwe who has recently commenced a position in Auckland with a large public hospital facility

**Samashnee Govender** – a South African qualified radiographer who has accepted an ongoing position with a supportive independent practice. Sam has relocated with her husband to Queensland in the south-east of the state.

**Nadiya Wilkinson** – a UK qualified radiographer who has accepted a permanent position under sponsorship, with a large independent practice. Nadiya is relocating with her family to the New South Wales north-coast.

**Rachel Gould** – a general sonographer from Canada who is joining a busy regional public hospital department in New Zealand's north island.

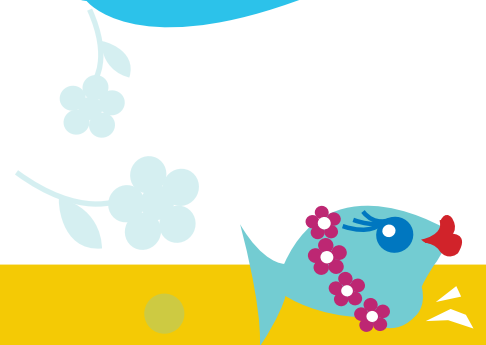
## Fun Facts

### Australia

- No part of Australia is more than 1,000 km from a beach and the ocean
- We call Australian's from Queensland "banana benders" and people from Western Australia "sandgropers"
- The Great Barrier Reef is the largest organic construction on earth
- The Tasmanian Devil does exist and it has the jaw strength of a crocodile

### New Zealand

- There are no land snakes, native or introduced, in NZ
- Organised commercial bungee jumping first began in New Zealand
- In 1893, New Zealand became the first country to give women the right to vote
- The logo for the Royal New Zealand Air Force is a kiwi; a flightless bird



# Dates For Your Diary

## Mammography

19 – 21 October 2017  
25th World Cancer Conference  
Rome, Italy

## Physiotherapy

27-29 November 2017  
5th International Conference on  
Physiotherapy  
Dubai, United Arab Emirates

## Podiatry

16 - 18 November 2017  
College of Podiatry Annual Conference  
Liverpool, United Kingdom

## Climate

Average temps for spring across Australia & New Zealand:

	SEPTEMBER			OCTOBER			NOVEMBER		
	Min (c°)	Max (c°)	Rainfall (mm)	Min (c°)	Max (c°)	Rainfall (mm)	Min (c°)	Max (c°)	Rainfall (mm)
Sydney	10	20	61	13	22	72	15	24	81
Melbourne	8	17	58	9	20	72	11	22	60
Brisbane	12	24	35	16	26	94	18	28	97
Cairns	19	28	34	21	29	47	22	31	94
Darwin	23	33	16	25	33	70	25	34	140
Perth	9	20	71	10	23	45	13	26	26
Adelaide	9	18	51	11	21	45	13	24	31
Hobart	6	15	54	8	17	62	9	19	54
Auckland	10	16	40	12	17	40	13	19	40
Wellington	9	14	50	11	16	50	11	17	40
Christchurch	5	15	30	7	17	50	10	19	20



**global health source**

allied health recruitment

For further information or to discuss your interest in employment contact Global Health Source on:

**freecall** Australia: 1800 010 822  
Overseas: 00800 9227 0822

**t** +618 9227 0822  
**f** +618 9227 0833

**w** [globalhealth.com.au](http://globalhealth.com.au)  
**e** [ghs@globalhealth.com.au](mailto:ghs@globalhealth.com.au)

**PO Box** 8186 Perth WA 6849  
338 Beaufort Street Perth WA 6000